

POD G SOUTH - WEST

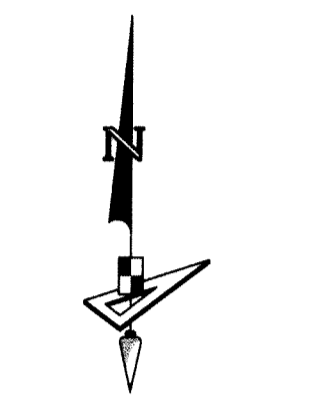
BEING A PORTION OF SECTION 1, TOWNSHIP 43 SOUTH, RANGE 40 EAST,
CITY OF WESTLAKE, PALM BEACH COUNTY, FLORIDA, BEING IN PART A REPLAT OF A PORTION
OF TRACT M-3, AS SHOWN ON THE PLAT OF PERSIMMON BOULEVARD WEST - REPLAT,
PLAT BOOK 129, PAGES 129 AND 130, PUBLIC RECORDS OF PALM BEACH COUNTY, FLORIDA

NORTHEAST CORNER OF
SECTION 1, TOWNSHIP 43 S., RANGE 40 E.
SET 3.5" IRON PIPE "PUBLIC LAND SURVEY
CORNER-TALLAHASSEE MERIDIAN"
BRASS DISK "10' EAST" SET IN CONCRETE
FOUND 10' EAST ON SECTION LINE
N: 884626.7147 - E: 886137.1629
NAD83 (2007 ADJUSTMENT)
CERTIFIED CORNER RECORD #107597

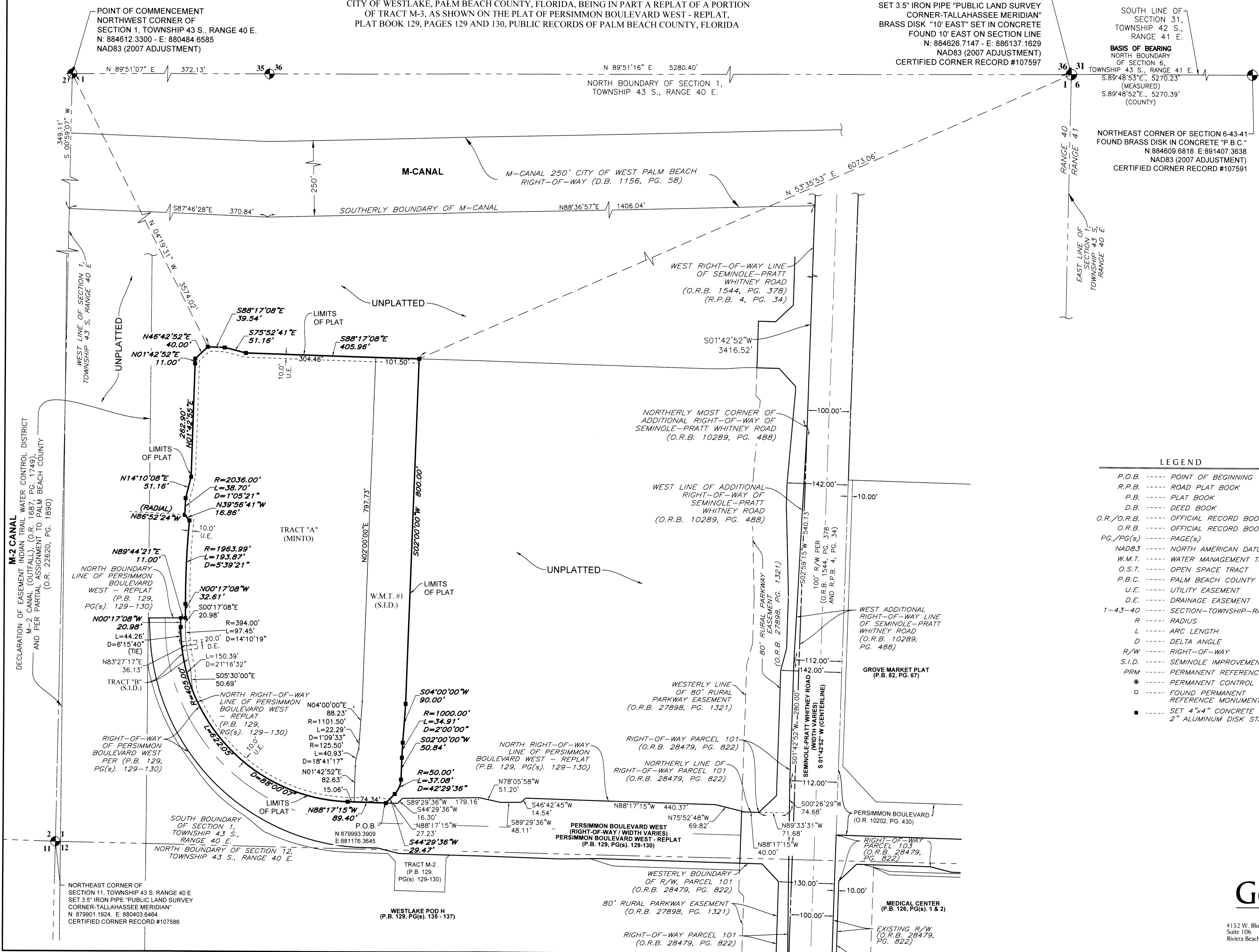
SOUTH LINE OF
SECTION 31,
TOWNSHIP 42 S.,
RANGE 41 E.
BASIS OF BEARING
NORTH BOUNDARY
OF SECTION 6,
TOWNSHIP 43 S., RANGE 41 E.
S.89°48'53"E, 5270.23'
(MEASURED)
S.89°48'52"E, 5270.39'
(COUNTY)

NORTHEAST CORNER OF SECTION 6-43-41
FOUND BRASS DISK IN CONCRETE "P.B.C."
N:884609.6818 E:891407.3638
NAD83 (2007 ADJUSTMENT)
CERTIFIED CORNER RECORD #107591

56



SCALE 1" = 100'
0 50 100 200
SEE NOTE ON SHEET 1
FOR BASIS OF BEARINGS



LEGEND

- P.O.B. ----- POINT OF BEGINNING
- R.P.B. ----- ROAD PLAT BOOK
- P.B. ----- PLAT BOOK
- D.B. ----- DEED BOOK
- O.R./O.R.B. ----- OFFICIAL RECORD BOOK
- O.R.B. ----- OFFICIAL RECORD BOOK
- PG./PG(s) ----- PAGE(S)
- NAD83 ----- NORTH AMERICAN DATUM OF 1983
- W.M.T. ----- WATER MANAGEMENT TRACT
- O.S.T. ----- OPEN SPACE TRACT
- P.B.C. ----- PALM BEACH COUNTY
- U.E. ----- UTILITY EASEMENT
- D.E. ----- DRAINAGE EASEMENT
- 1-43-40 ----- SECTION-TOWNSHIP-RANGE
- R ----- RADIUS
- L ----- ARC LENGTH
- D ----- DELTA ANGLE
- R/W ----- RIGHT-OF-WAY
- S.I.D. ----- SEMINOLE IMPROVEMENT DISTRICT
- PRM ----- PERMANENT REFERENCE MONUMENT
- ----- PERMANENT CONTROL POINT
- ----- FOUND PERMANENT REFERENCE MONUMENT
- ----- SET 4"x4" CONCRETE MONUMENT WITH 2" ALUMINUM DISK STAMPED "PRM LB 7768"

GeoPoint
Surveying, Inc.

4152 W. Blue Heron Blvd. Phone: (561) 444-2720
Suite 106 www.geopointsurveying.com
Riviera Beach, FL 33404 Licensed Business Number LB 7768

Sheet No. 2 of 2 Sheets